

# ***EVT Multi Thermal Inspector***

## ***Based on EyeVision Machine Vision Software***



### ***Monitoring for correct temperature***

The EVT Smart Multi Thermal Inspector (MTI) can monitor an arbitrary number of areas for their correct temperature. Additionally a warning can be issued, when the temperature is too high or too low.

### ***Definition of selection areas***

For the definition of the monitored plant areas different selection areas can be used. Besides the standard circle and rectangle also a freely oriented rectangle and a freely definable polygon are available. The user can define an arbitrary number of inspection windows. There can be connected several cameras to the MTI. The statistic allows an overview of measurement values and process.

### ***precise for a 100% In-line control***

### **Features**

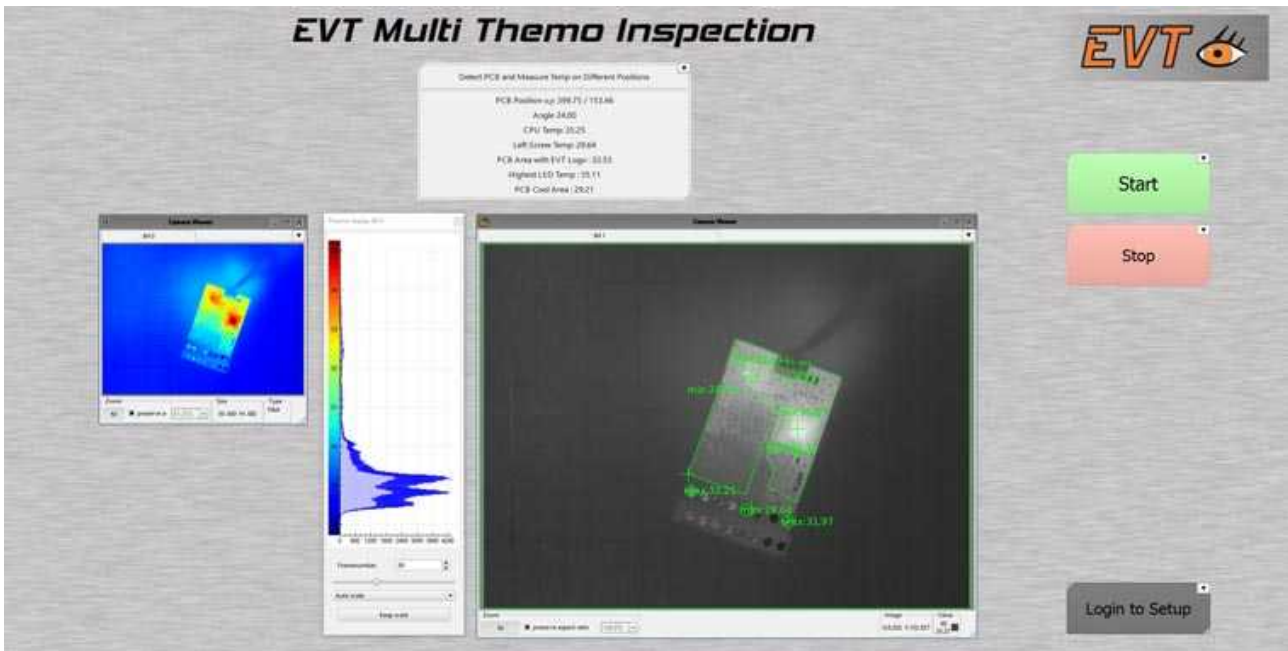
For thermal imaging cameras  
By Flir and Optris

Interfaces:  
GigE, USB, RS232, RS485

Easy integration into  
- Trackersystem  
- SCADA  
- PLC

Communication protocols for  
- Profinet  
- OPC UA  
- Modbus  
- UDP & TCP/IP

Stand-alone System or  
Headless System



*EVT Multi Thermal Inspector Process Mode: monitor temperature on a PCB*

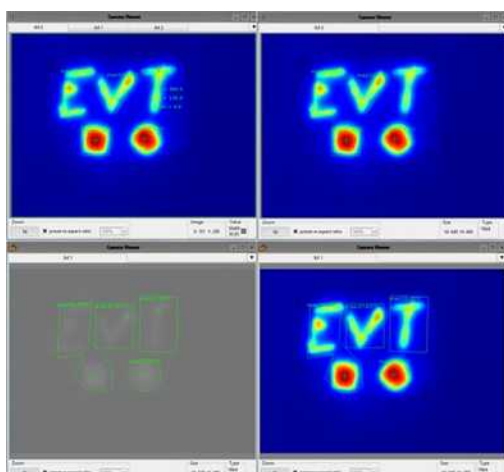
### **Interfaces and protocols**

The System can communicate via the hardware interfaces with a tracker-system as well as with SCADA or PLC.

With the communication protocols such as Profinet, Modbus, TCP/IP & UDP the system can communicate with the machine.

### **Monitoring moving objects**

Even the monitoring of moving objects in the field of view, can be solved with a search command, which finds structures in the field of view. All further evaluations can then be carried out at the detected position.



### **Gray/ Color image capture extension**

An optional gray-/color image capture extension of the system is also possible and allows the user to capture and evaluate gray scale and color images in addition to the thermal images. For example OCR, DMC, QR, bar code, which cannot be captured with thermal imaging. Also possible is the recognition on a display, e.g. a LED which is not only inspected for the correct temperature but also its color.

### **EVT GmbH Eye Vision Technology**

Gartenstraße 26  
76133 Karlsruhe  
Germany

[www.evt-web.com](http://www.evt-web.com)  
[info@evt-web.com](mailto:info@evt-web.com)

Tel.: +49 721 668 004 23 0  
FAX: +49 721 626 905 96

**Contact us.  
We are happy to help!**