

Messen
Prüfen
Kontrollieren
Sortieren
Positionieren
Vollständigkeitskontrolle
Vorhandenseinskontrolle
Oberflächeninspektion
Teileprüfung
Werkzeugvoreinstellung
3D Sehen
3D Erkennung
Robot Vision
Markierungskontrolle
Koplanarität
BGA-Prüfung
Konturprüfung
Fehler- und Verschmutzungserkennung
OCR / OCV
Zeichenerkennung
Code Lesen
Faden- und Stoffprüfung
Papier- und Folienprüfung
Metallprüfung
Displayprüfung LCD, LED, OLED
Mustervergleich
Blasenkontrolle
Robotersteuerung
Bohrer Vermessung
Thermografie
Plastik-Inspektion
2D
und vieles mehr...

Product data:

EmSens ObjectCount



Description:

Easy object counting!

The Object Count (BLOB) command is a very flexible command.

The command differentiates between different brightness regions in an image.

The correlation command finds a gray scale pattern which has been defined in advance. It also reports the position of the pattern and evaluates the resemblance to the previously defined pattern.

More information on our website: www.evt-web.com.

Contact us for more information: **+49 (0) 721 668 004 23 0**

Camera Models Basler ace

Model	Resolution	Sensor	Frame Rate	Interface
Basler acA800-200gm	800 x 600	1/3.6" monochrome	240 fps	Gigabit Ethernet
Basler acA1440-73gm	1440 x 1080	1/2.9" monochrome	73 fps	Gigabit Ethernet
Basler acA1600-60gm	1600 x 1200	1/1.8" monochrome	60 fps	Gigabit Ethernet
Basler acA2440-20gm	2448 x 2048	2/3" monochrome	20 fps	Gigabit Ethernet
Basler acA800-510um	800 x 600	1/3.6" monochrome	511 fps	USB 3.0
Basler acA1440-220um	1440 x 1080	1/2.9" monochrome	220 fps	USB 3.0
Basler acA2440-35um	2448 x 2048	2/3" monochrome	35 fps	USB 3.0
Basler acA800-200gc	800 x 600	1/3.6" color	240 fps	Gigabit Ethernet
Basler acA1440-73gc	1440 x 1080	1/2.9" color	73 fps	Gigabit Ethernet
Basler acA800-510uc	800 x 600	1/3.6" color	511 fps	USB 3.0
Basler acA1440-220uc	1440 x 1080	1/2.9" color	220 fps	USB 3.0
Basler acA2440-35uc	2448 x 2048	2/3" color	35 fps	USB 3.0

Camera Models Basler dart

Model*	Resolution	Sensor	Frame Rate	Interface
Basler daA1280-54um	1280 x 960	1/3" monochrom	54 fps	USB 3.0
Basler daA1600-60um	1600 x 1200	1/1.8" monochrom	60 fps	USB 3.0
Basler daA1920-30um	1920 x 1080	1/3.7" monochrom	30 fps	USB 3.0
Basler daA2500-14um	2590 x 1942	1/2.5" monochrom	14 fps	USB 3.0

* all camera models are also available with color sensor



Computing Hardware

EmSys – Machine Vision Computer

Features

- Intel ATOM SoC E3845 Quad Core 1.91 GHz
- 4G-byte DRAM, 64G-byte storage for operating system
- 64-bit OS: Windows 10 IoT Enterprise, Windows 10 IoT Core, Ubuntu 16.04
- HDMI and VGA Display Ports
- 4 GigE camera ports with PoE+ support
- 4 independent constant current LED driver
- 8 digital Inputs and 8 digital Outputs
- DINrail mount, fanless



Raspberry Pi



Odroid



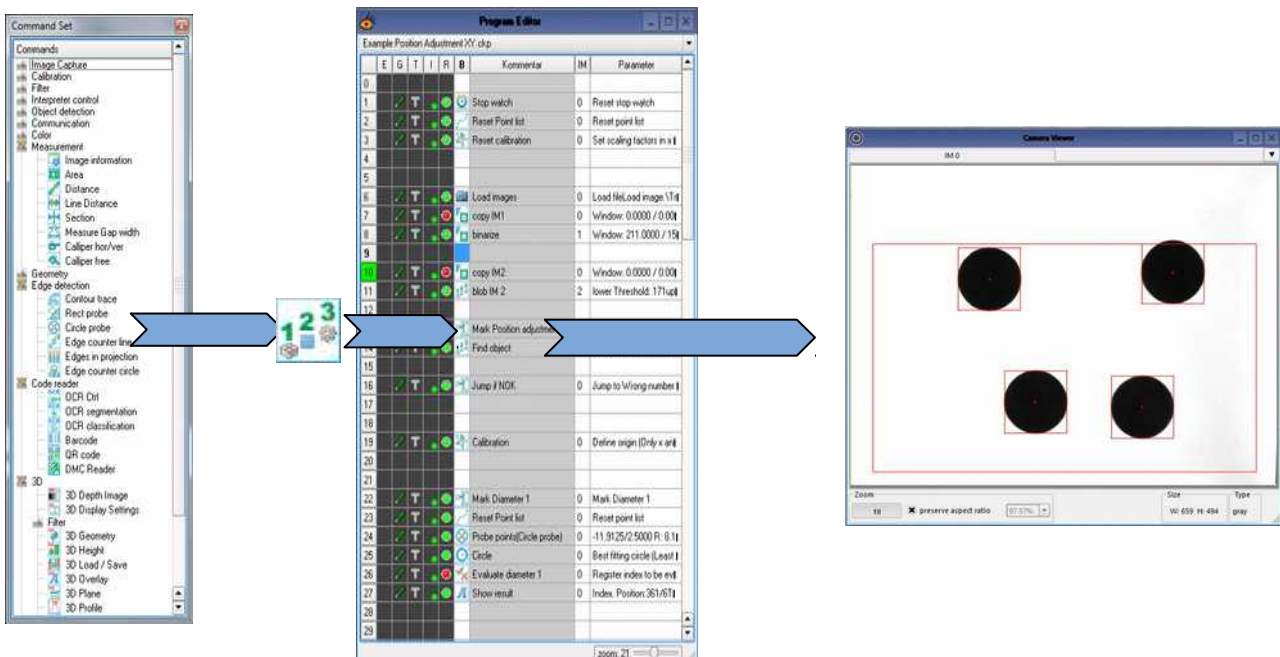
Command Set

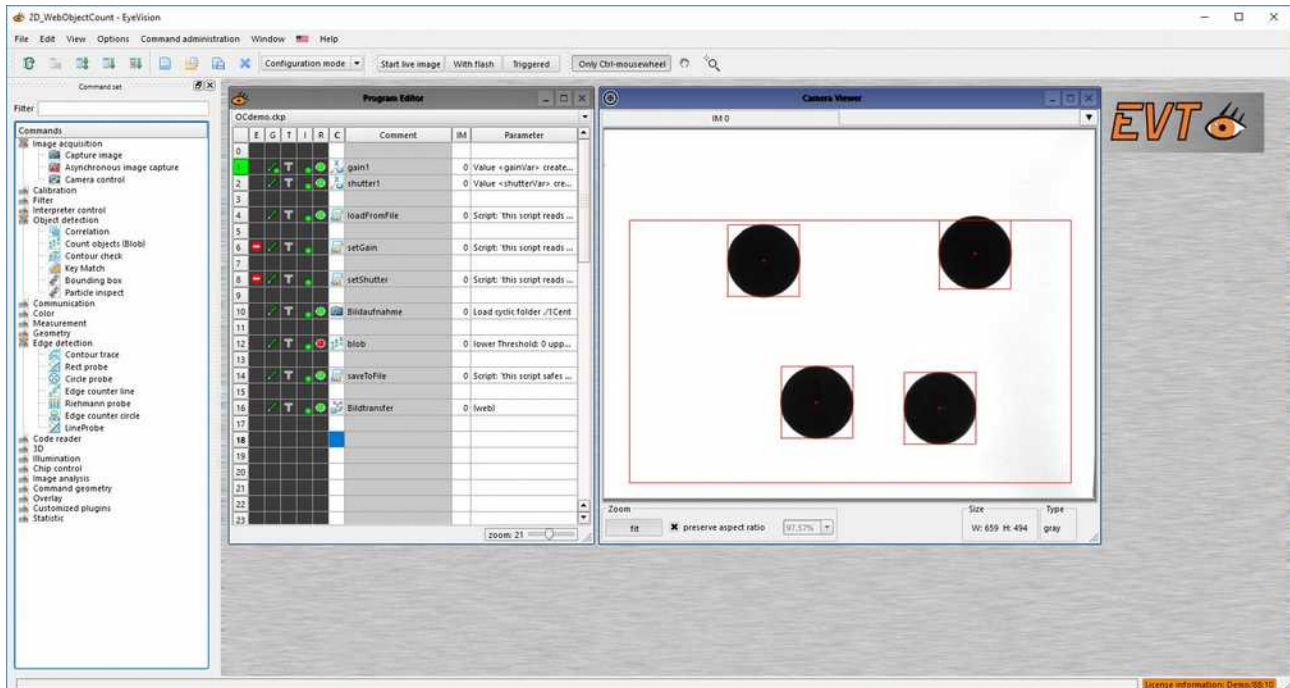
	Image Acquisition		Object count BLOB		Script Interpreter		Overlay Arrow
	Asynchronous Image Acquisition		Check Input		Window		Overlay Circle
	Camera Control		Set Output		Rectangular edge detection		Overlay Cross
	Calibration		Display Register Values		Scale Gray Values		Overlay Line
	Stop watch		Global String		Point Operation Set		Overlay Square
	Program Flow Control		Image Transfer				
	Subroutine call		Image Information				
	Value evaluation		Point List				

EyeVision Software

The drag-and-drop software with the graphical user interface.

Every EmSens vision sensor contains the EyeVision software with a specially activated command set (see list above). This command set can be extended with any command out of the EyeVision command range.





EyeVision Configuration Mode: Counting objects with the BLOB command

Further *EmSens* Vision Sensors:

- EmSens BarCode Reader
- EmSens OCR Reader
- EmSens Match
- EmSens Measure
- EmSens ColorInspect
- EmSens DMC Reader