

Messen

Prüfen

Kontrollieren

Sortieren

Positionieren

Vollständigkeitskontrolle

Vorhandenseinskontrolle

Oberflächeninspektion

Teileprüfung

Werkzeugvoreinstellung

3D Sehen

3D Erkennung

Robot Vision

Markierungskontrolle

Koplanarität

BGA-Prüfung

Konturprüfung

Fehler- und
Verschmutzungserkennung

OCR / OCV

Zeichenerkennung

Code Lesen

Faden- und Stoffprüfung

Papier- und Folienprüfung

Metallprüfung

Displayprüfung LCD, LED,
OLED

Mustervergleich

Blasenkontrolle

Robotersteuerung

Bohrer Vermessung

Thermografie

Plastik-Inspektion

2D

und vieles mehr...

Product data:

EySense ObjectCount



Description:

Easy object counting!

The Object Count (BLOB) command is a very flexible command.

The command differentiates between different brightness regions in an image.

The correlation command finds a gray scale pattern which has been defined in advance. It also reports the position of the pattern and evaluates the resemblance to the previously defined pattern.

More information on our website: www.evt-web.com.

Contact us for more information: **+49 (0) 721 668 004 23 0**

Senor Models

Model	Resolution	Sensor	Focal length	Integrated illumination	Processor
ES ObC_0	736 x 480	1/3" CMOS	6, 12, 25 mm	LED: white, red or infrared	1 GHz
ES ObC_1	736 x 480	1/3" CMOS	C-Mount	none	1 GHz
ES ObC HR_0	1024 x 768	1/1,8" CMOS	12 mm	LED: white, red or infrared	1 GHz
ES ObC HR_1	1024 x 768	1/1,8" CMOS	C-Mount	none	1 GHz
ES ObC XHR_0	1280 x 1024	1/1,8" CMOS	12 mm	LED: white, red or infrared	1 GHz
ES ObC XHR_1	1280 x 1024	1/1,8" CMOS	C-Mount	none	1 GHz

Technical Data

EyeSens Vision Sensoren can include lens (6, 12 or 25 mm focal length) and lighting (8 LEDs).

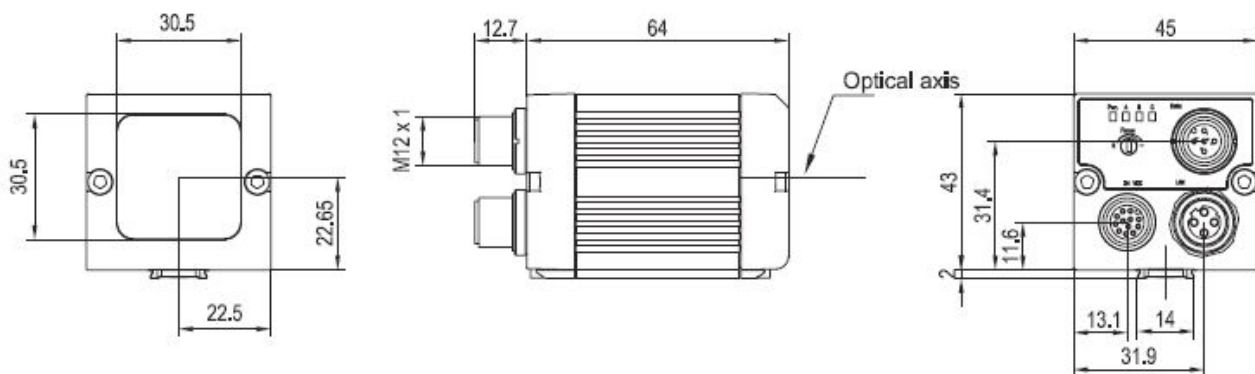
Electrical Data

Digital I/O	1/ 3 - 4 and additional 4 freely allocatable
Interface	Ethernet, RS232 or RS422
Max. output current	50 mA
Operating voltage	24V DC (- 25 % / + 10 %)

Mechanical Data

Dimensions (L x B x H)	65 x 45 x 45 mm
Weight	approx. 160 g
Connector	Supply and I/O M12 12-pin, Ethernet M12 4-pin, Data M12 5-pin
Housing	aluminium, plastic

Dimensions



Command Set

	Image Acquisition		Object count BLOB		Script Interpreter		Overlay Arrow
	Asynchronous Image Acquisition		Check Input		Window		Overlay Circle
	Camera Control		Set Output		Rectangular edge detection		Overlay Cross
	Calibration		Display Register Values		Scale Gray Values		Overlay Line
	Stop watch		Global String		Point Operation Set		Overlay Square
	Program Flow Control		Image Transfer				
	Subroutine call		Image Information				
	Value evaluation		Point List				

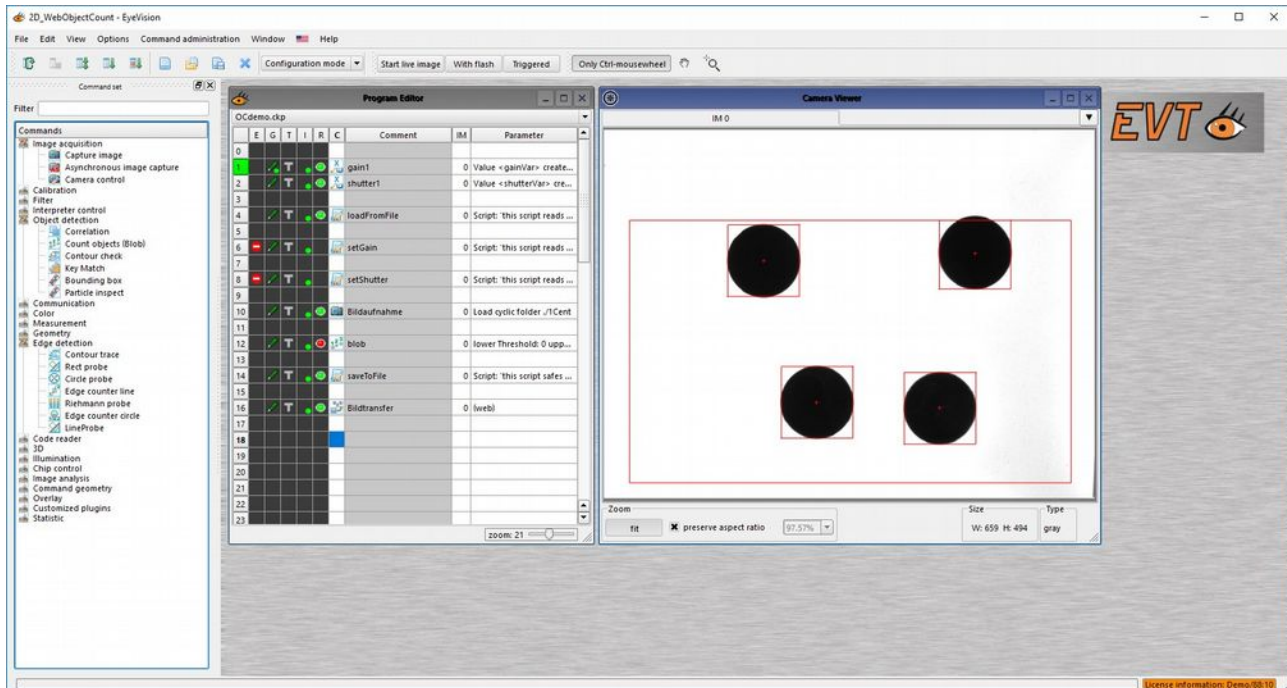
EyeVision Software

The drag-and-drop software with the graphical user interface.

Every EyeSens vision sensor contains the EyeVision software with a specially activated command set (see list above). This command set can be extended with any command out of the EyeVision command range.

The screenshot displays the EyeVision software interface. On the left is the 'Command Set' window with a tree view of various commands. In the center is the 'Program Editor' window showing a sequence of commands in a table format. On the right is the 'Camera Viewer' window showing a live video feed with four black circles and red bounding boxes overlaid on it. Blue arrows indicate the flow of data and control between these components.

Line	Icon	Command	Parameter
0			
1	Stop watch	0	Reset stop-watch
2	Reset Point list	0	Reset point list
3	Reset calibration	0	Set scaling factors in x, y
4			
5			
6	Load images	0	Load file, Load image, VTI
7	copy IM1	0	Window: 0.0000 / 0.00
8	binarize	1	Window: 211.0000 / 150
9			
10	copy IM2	0	Window: 0.0000 / 0.00
11	blob IM 2	2	lower Threshold: 171up
12			
13	Mark Position adjust		
14	Find object		
15			
16	Jump if NOK	0	Jump to wrong number
17			
18			
19			
20	Calibration	0	Define origin (Only x and y)
21			
22	Mark Diameter 1	0	Mark Diameter 1
23	Reset Point list	0	Reset point list
24	Probe points(Circle probe)	0	-11.9125/2.5000 R: 8.11
25	Circle	0	Best fitting circle (Least 1)
26	Evaluate diameter 1	0	Register index to be eval
27	Show result	0	Index: Position: 361/671
28			
29			



EyeVision Configuration Mode: Counting objects with the BLOB command

Further EyeSens Vision Sensors:

- EyeSens BarCode Reader
- EyeSens OCR Reader
- EyeSens Match
- EyeSens Measure
- EyeSens ColorInspect
- EyeSens DMC Reader
- EyeSens Advanced DMC, BarCode, OCR
- EyeSens Advanced DMC, BarCode