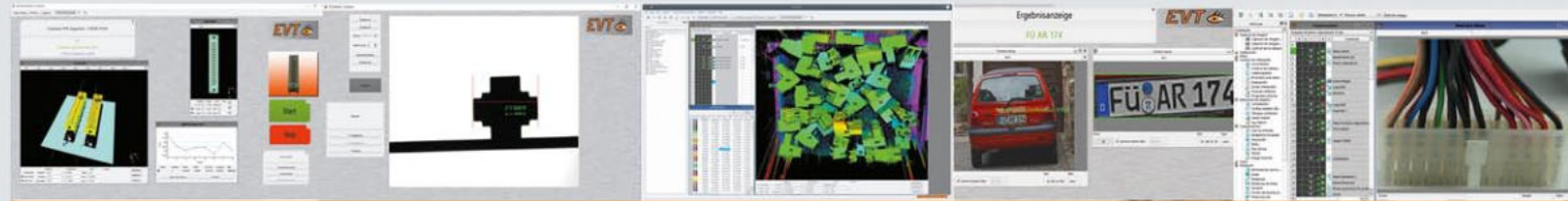


image processing software

EyeVision forms the basis for numerous measurement and inspection tasks in image processing. Features are:

1. Adaptable graphical user interfaces (GUI)
2. Program creation with drag and drop
Parameterization without programming
3. EyeVision supports all software platforms:
Windows, Linux, ARM, x86, Smart Camera Systems, PC & Embedded, Vision Sensors.
4. Supports many camera manufacturers:
USB, GigE, FireWire, Camera Link, CoaXPress, MIPI etc.
5. EyeVision has different SDK for integration of new commands or hardware
6. Through the various communication interfaces and the integrated web servers, the EyeVision can be controlled and monitored worldwide.



EyeVision Advanced Image processing software

Interest aroused?
Visit the



EVT Eye Vision Technology

Gartenstraße 26, 76133 Karlsruhe, Germany

Tel.: +49 721 668 004 23 0

info@evt-web.com

www.evt-web.com



Deep Learning
Accelerator Chip

New 3D commands

Lockin & Impuls
Thermography

New Deep Learning
Commands

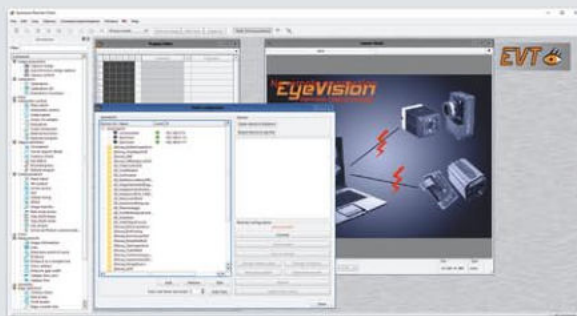
New Machine
Learning Commands

Pretrained Networks

New Color Toolset

New communication
protocols

Innovative GUI



EyeVision Remote

Innovative, precise, simple...

EyeVision offers numerous new functions and advantages:

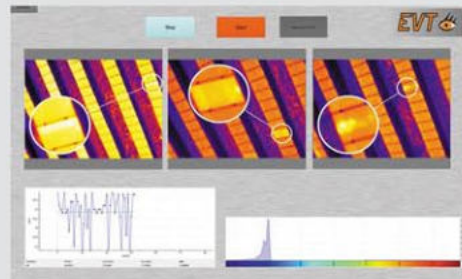
- Additional 3D commands
- Easy Hand Eye Calibration in 2D and 3D
- Advanced 3D Calibration setup
- Advanced object detection
- Support of new 3D sensors like Keyence, Percipio , Micro Epsilon
- Advanced thermal commands (Passiv, Lockin, Impuls Thermography)
- Advanced color toolset (Lab,HSI,RGB,YUV)
- Advanced Deep Learning- and Machine Learning Features e.g. the object finder and the object recognizer (one site training)
- Improved remote interface for easy training of remote systems
- Advanced communication protocols: Profinet-, Modbus-, Interbus-, MQTT- and OPC- UA, TCPI/IP, RS232 and RS485 (...)

Example: Bin picking

With the new 3D commands of the *EyeVision*, bin picking becomes very easy from the recognition of the position and shape of a taught object, to the concrete gripping position. The Hand Eye calibration allows the gripping data to be sent directly to the robot.

Example: Thermography

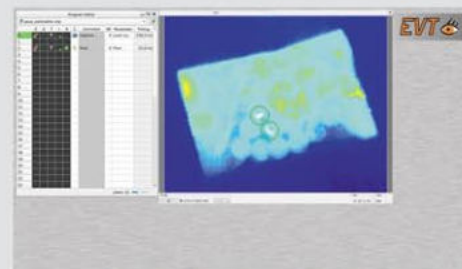
Thermo commands not only determine the temperature, but also find hidden objects, cavities, material defects (e.g. GRP). Both impulse and lockin thermography allow conclusions to be drawn about layers and structures.



Inspection of a surface with the *EyeVision* software

Example: Hyperspectral

EyeVision makes hyperspectral data usable. This allows the composition as well as the chemical and physical properties of various substances to be analyzed and visualized.



Inspection through hyperspectrality

Application fields:



Identify

Incoming goods inspection



Mount

Instruction of employees in production



Control

Quality control



Picking

Outgoing goods inspection

Measuring
Inspection
Check
Skeletonize
Positioning
Traffic control
Machine Learning
Test for completeness
Attendance control
Component inspection
Surface inspection
Number plate reading
3D matching
3D Vision
Robot Vision
Coplanarity
People entry control
Contour inspection
Contamination test
Defect detection
OCR / OCV
Barcode reading
DMC & QR Code reading
Thread inspection
Paper inspection
Plastic inspection
Metal inspection
Display inspection
Pattern matching
Blister inspection
Semiconductor industry
Food industry
Electrical industry
Pharmaceutical industry
Transport & Logistics
Stamping industry
etc.