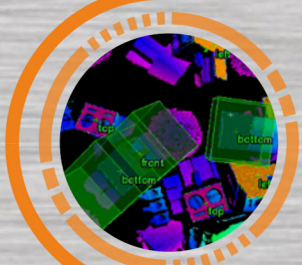
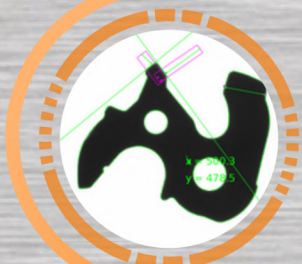


# The versatility of EyeVision software



## The software for all image processing tasks:

- Line scan camera applications
- Classic 2D application
- 3D (line and point cloud application)
- Thermography and hyperspectral
- Robot vision

### CONTACT US



Ettlinger Straße 59  
76137 Karlsruhe  
Germany



+49 721 688004 230



[www.evt-web.com](http://www.evt-web.com)



[info@evt-web.com](mailto:info@evt-web.com)



# EyeVision

Image processing software

Includes AI, deep learning and robot vision



# ONE SOFTWARE FOR ALL APPLICATION AREAS

## Many tasks - one solution!



Thanks to its modular design, it can be used for everything from simple applications to highly complex multi-

camera systems with parallel processes, whereby the structure of the program always ensures a clear overview.

The customer receives a full version\* for the implementation of his image processing task and therefore only has to purchase the software after parameterization, which is then specially tailored to his requirements, so that they only pay for what they actually need.

\* this is initially free of charge

### What EyeVision offers

- 5 basic packages
- Over 200 functional tools
- Simple and intuitive operation, e.g. via drag & drop
- Integration of own function tools can be easily implemented by the customer
- Extensive GUI designer for creating individual program interfaces

### Deep learning

The integrated **deep learning** makes it possible to solve even very difficult projects easily and reliably with classic image processing. Pre-trained models allow the realization of many tasks, whereby customer support is available for the **creation of models** for tasks that cannot be realized with the existing tools.



### Robot Vision



A special **robot communication tool** allows the exchange of data with the robot so that there is a perfect symbiosis between image processing and the handling systems. Easy-to-use and special function tools allow, for example, **hand-eye calibration** at the touch of a button.

### Independency

**All commercially available cameras**, whether line scan, matrix, 3D or thermal cameras, are supported by EyeVision. New cameras are constantly being integrated and models outside the mainstream can be implemented quickly and cost-effectively at the customer's request. EyeVision can be installed on almost **all operating systems**, regardless of whether it is a PC-based system or a smart camera. Communication with higherlevel systems takes place via **all common protocols and interfaces**. Bidirectionality, meaning that EyeVision can receive information and output results, is always guaranteed.



More information here: 

